



POWER ON YOUR ENERGY

LTE USB WI-FI ROUTER USER MANUAL

W02



EN

Dear user,
Thank you for choosing ERGO product. Your choice is very important for us and this means that ERGO has a new user. We hope you will enjoy our products and services. We also hope that you'll take the opportunity to express your wishes and feedback about our product through the official ERGO hotline, which help us to improve the quality of our products and services. If you have any problems using our product, please contact our service department. Your support is our main advantage, and your recognition and evaluation are excellent motivation for ERGO.

Sincerely,
ERGO sales department.

16

CONTENTS

	Safety Instructions	18
	What is Included	19
	Main unit description	19
	SIM Card instalation	20
	Using a modem	22
	Setting up Wi-Fi connection	23
	Device management	24
	Troubleshooting	25
	Environmental security. Recycling	26

17

SAFETY INSTRUCTIONS

Please read the recommendations below to extend the life of the product.

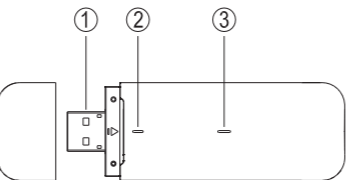
- Do not disassemble or replace the original components of the product.
- Do not place the product in water or any other liquid, as this product is not waterproof.
- Unplug the product from another device if it gets into the liquid, as this may cause a fire or an electric shock if the user continues to use it.
- When installing the product, make sure that your hand is dry to avoid electrical shock.
- Do not hold the product near a source of heat or fire.
- Do not hold the product in a strong magnetic field, as this may lead to incorrect operation of the device.

18

WHAT IS INCLUDED

- LTE USB Wi-Fi router.
- User Manual.
- Warranty card.

MAIN UNIT DESCRIPTION



1. USB CONNECTOR

2. WIFI LED INDICATOR

Green means the WiFi is open.

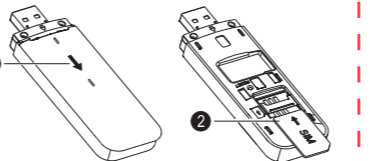
19

3. SIGNAL LED INDICATOR

- Green means the Wingle is connected to 4G or 3G network.
- Red means the Wingle is with NO SIM card or you have inserted the wrong operator's SIM card and your network is locked.
- Red blinking means the Wingle is searching network.

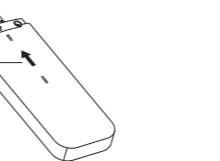
SIM CARD INSTALATION

- Slide the cover to remove it from the Wingle.
- Insert the SIM card into the card slot as below.



20

3. REPLACE THE COVER AND SLIDE IT INTO PLACE.

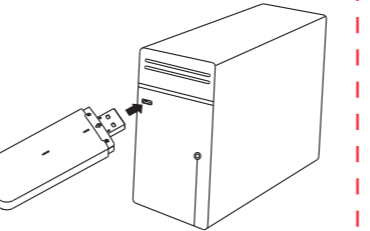


- NOTE**
DO NOT remove the SIM card when the Wingle is plugging in the PC as this may damage the card and the Wingle.

21

USING A MODEM

- Insert the SIM card
- Plug the Wingle into the USB ports of your PC with right position as blow.



- Wait for a few seconds until the signal indicator light turn to green which means the Wingle is connected to the network.

22

Disconnecting from network connection

Unplug the Wingle from the computer.

- NOTE**
When unplugging the device from the computer, remove it gently to protect the Wingle and the USB port of the computer.

SETTING UP WI-FI CONNECTION

- Insert the SIM card
- Plug the Wingle into the USB ports of your PC or power adapter
- Select the wireless network connection with the Wingle's SSID and click «Connect». If the security mechanism is applied, you need to enter the correct network key. The **SSID and network key** are printed on the device label.

23

NOTE

- If you are on the journey or you can't use a computer, our modem can be used with any mobile phone charger with USB port (5V and >1A).
- If you want to change the SSID & Password, please enter <http://192.168.8.1> in the address box and enter the management page, then you can change them.

DEVICE MANAGEMENT

- Make sure the end-user device is connected to the Wingle.
- Open the browser, enter <http://192.168.8.1> in the address box.
- Enter the password, and click "login". The administrator has the right to check and modify

24

configuration permission.

- NOTE**
The default User Name and Password is **admin**.

TROUBLESHOOTING

If you are having trouble with the Wingle, follow these steps:

- Log into the device management website and click the help icon on the top right corner for answers to frequently asked questions.
- If the Wingle is not responsive, reboot it by pressing the 'Reset' button for about 5 seconds to restore the Wingle to factory settings.

NOTE

- The product shall only be connected using a USB interface of version USB 2.0.

25

- The maximum operating temperature of the MiFi is 35°C.
- This equipment is in compliance with the essential requirements and other relevant provisions of directive 1999/5/EC.

ENVIRONMENTAL SECURITY. RECYCLING

You can help to protect the environment! Please observe the rules: hand over non-operational electrical equipment to the appropriate waste disposal center. The manufacturer reserves the right to make changes to specifications and product design.

26

27



POWER ON YOUR ENERGY

